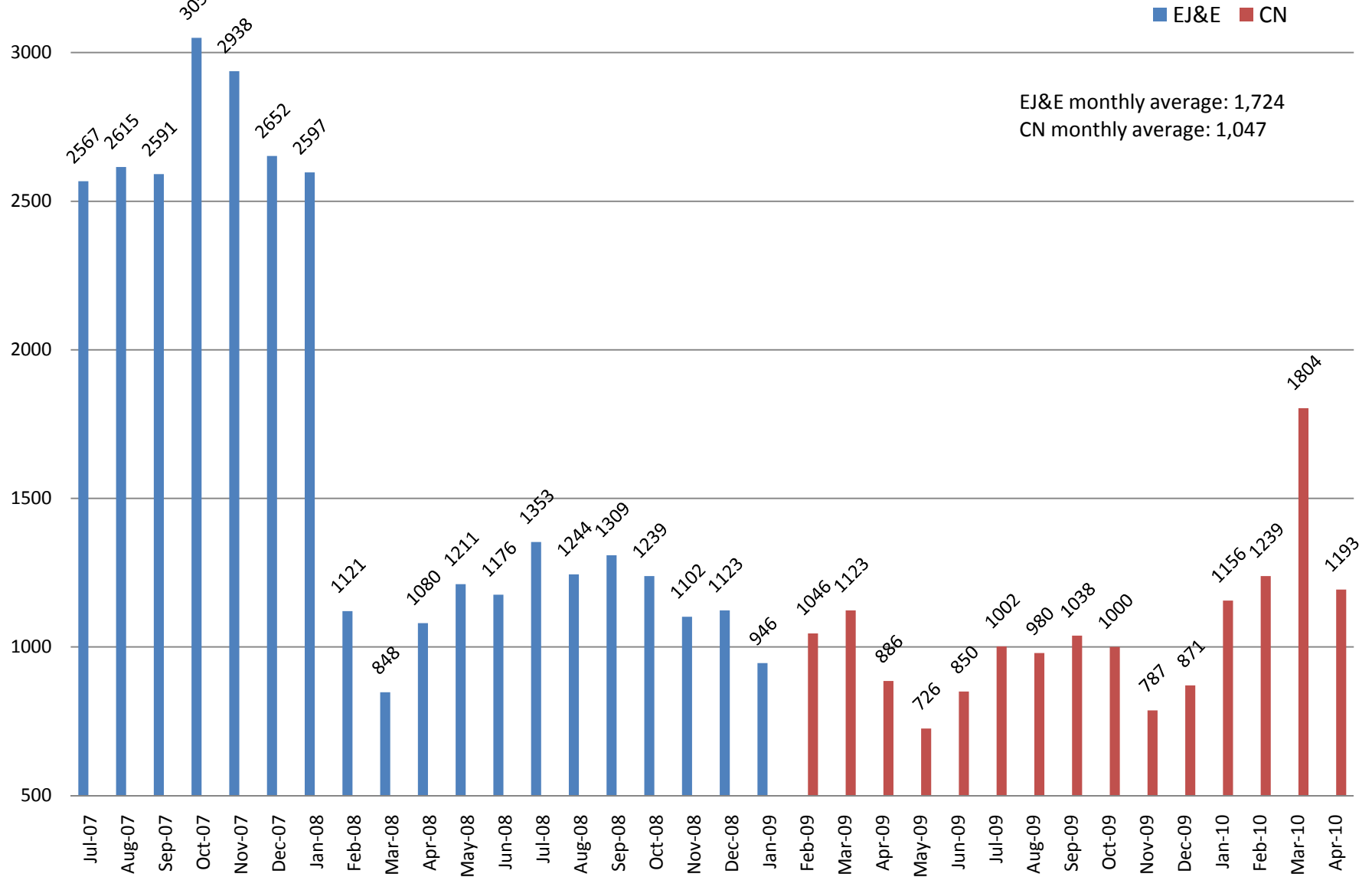


Automated Crossing Warning Device Activations of 10 Minutes or More for All RTU-equipped EJ&E Crossings



Notes: Jul. 2007 & Apr. 2010 estimated based on daily average of partial month data that was available. Only partial readings were taken in Mar. 2008, and possibly Feb. & Apr. 2008, as RTUs were transitioned from analog to digital.